

 **BATH SEATS**  
**CARE & USE INSTRUCTIONS**

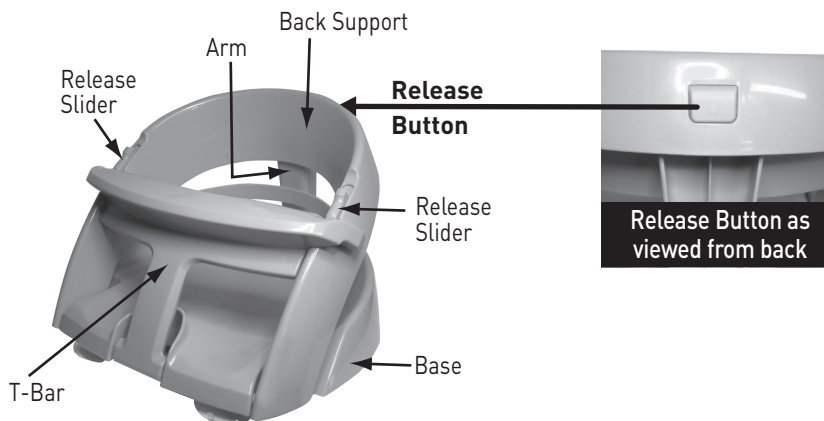
F660  
F661  
F662  
F663  
F664

**PLEASE RETAIN THESE INSTRUCTIONS FOR FUTURE REFERENCE**

Read instructions carefully before use. There is no substitute for adult supervision.

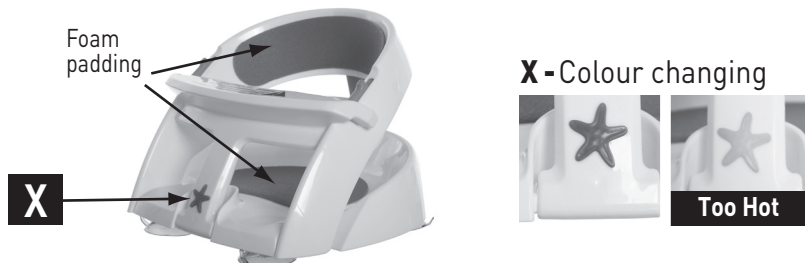
## Premium Bath Seat

F660, F662, F663, F664

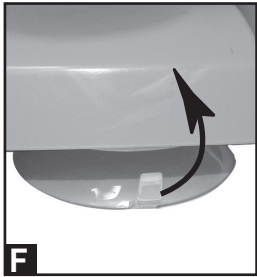
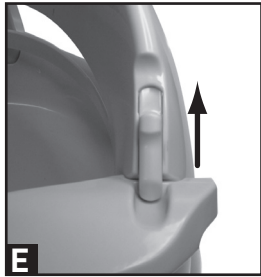
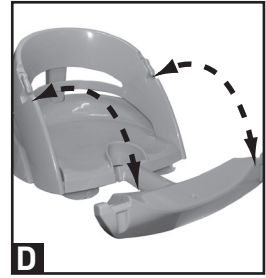
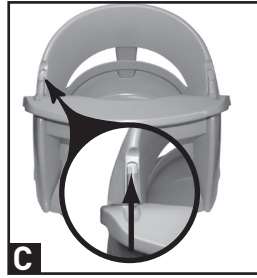
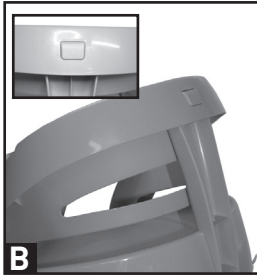
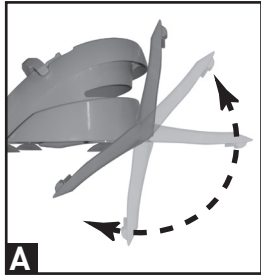


## Deluxe Bath Seat F661

with foam padding & heat sensing indicator



Specially designed by Dreambaby® for your baby's comfort and your convenience.



**!**

**WARNING-**  
Children have **DROWNED**  
while using bath aids.  
This is **NOT** a safety device.  
**ALWAYS** keep baby within arm's reach.  
**NEVER** leave baby in care of children.

**!**

## TO USE

1. Insert the Arm into the Back Support (A & B).
2. Ensure the bath surface is clean and dry.  
Consider the exact position the bath seat will be in when in use.  
Position away from taps to ensure children cannot access them.
3. Press the bath seat down firmly for at least 1 minute to fully engage suction cups.  
**SUCTION CUPS MAY NOT GRIP ON SOME TEXTURED OR ANTI-SLIP SURFACES. CHECK SUCTION CUPS ARE FIRMLY IN PLACE.**
4. To open the T-Bar, simultaneously slide the "Release Slider" buttons away from the T-Bar (C).  
With "Release Slider" buttons pushed back, open the T-Bar (E).
5. Add water to bath, starting with cold water and then add warm water.  
Check the bath water temperature is between (32.2 - 37.80°C).



## WARNING

Drowning can occur in a very short time and in very shallow water - as little as 2.5cm/1in.  
Always bathe your infant using as little water as necessary do not exceed 10cm/4in.

6. Position baby in the seat.  
**Caution: Ensure bath seat is firmly secured to bath tub before use.**
7. To close the T-Bar, return the T-Bar and snap closed under the "Release Slider" buttons (D).  
**Caution: To avoid any potential pinching, ensure child is clear of the T-Bar when snapping shut.**

**NOTE: F661 Deluxe Bath Seat with heat sensing indicator (X) - The heat sensitive temperature Star indicator will change color if the water is too hot (Z).**

## TO REMOVE

- Release the seat from the bath by lifting the tabs on the suction cups (F).

**DO NOT PULL THE SEAT UP FROM THE BATHTUB BEFORE RELEASING ALL OF THE SUCTION CUPS.**

## TO FOLD AWAY FOR EASY STORAGE (I)

- Press 'Release Button' to free the Arm from the Back Support (G & H).
- Rotate the Back Support into the underside of the Base of the Seat (A).

## TO CLEAN

- Wash in warm soapy water and air dry.  
Thoroughly clean suction cups regularly to avoid build up of soap scum.

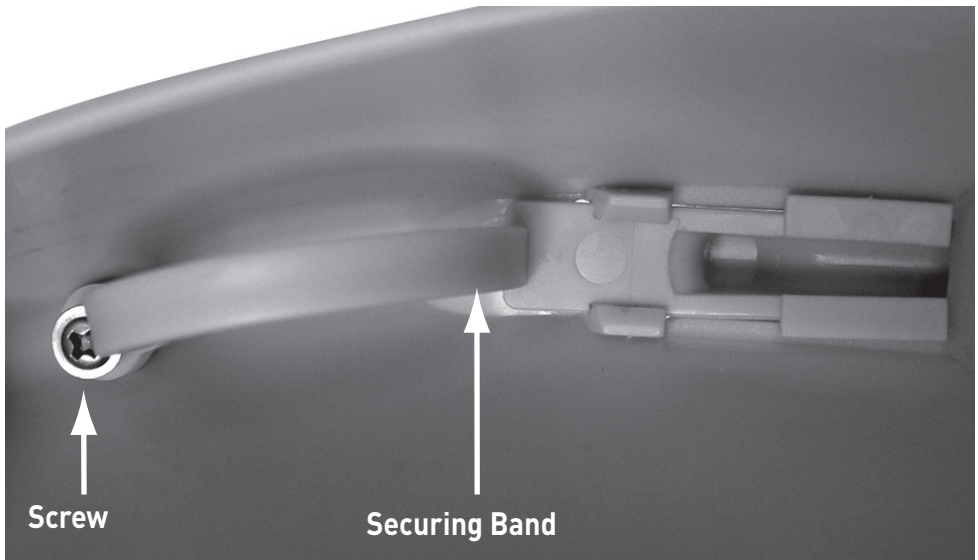
Regularly check all parts.  
Discontinue use if any parts are damaged or missing.



## WARNING

Suitable for babies able to sit up unassisted (approx. 5 months of age).  
**STOP** using when baby begins pulling to a standing position (approx. 10 months of age).  
Babies can drown even when other children are in or near the bathtub.  
**DO NOT** allow other children to substitute for an adult.  
**Never leave child unattended in the bathroom there is no substitute for adult supervision.**

# SAFETY CHECK:



**NOTE: ALWAYS ENSURE THAT  
SECURING BAND IS FIXED IN BY SCREW.**

Patent No. : US D573,800 S

## Look for the Dreambaby® range of Child Safety and Care Products.

Tee-Zed acknowledges that its customers may be entitled to statutory consumer guarantees and does not seek to exclude or limit them. These guarantees include that Tee-Zed's products are of acceptable quality. This Tee-Zed product is for the specific purpose detailed in the instructions and packaging and Tee-Zed considers use outside of that purpose to be abnormal use. To the maximum extent permitted by law, Tee-Zed does not accept any liability for damage:

- arising from abnormal use of the products;
- caused by installation or removal of the products other than in accordance with the supplied installation and removal instructions; or
- arising under the law of tort or contract.

Dreambaby® products by



Tee-Zed Products Pty Ltd  
PO Box 2022  
Bondi Junction NSW 1355

### Australia

☎ +61 (0)2 9386 4000

✉ info@tee-zed.com.au

[www.dreambaby.com.au](http://www.dreambaby.com.au)

Tee-Zed Products (N.Z.) Ltd  
PO Box 64013  
Botany Town Centre Auckland  
New Zealand

☎ +64 (0)9 274 8788

✉ info@tee-zed.co.nz

[www.dreambaby.co.nz](http://www.dreambaby.co.nz)

For all enquiries, please call customer service,

**Australia + 61 (0)2 9386 4000**

**New Zealand +64 (0)9 274 8788**

**United Kingdom +44 (0)844 800 9445**

Tee-Zed Products Ltd  
PO Box 29227  
Dunfermline, KY12 2DN  
United Kingdom

☎ +44 (0)844 800 9445

✉ info@tee-zed.co.uk

[www.dreambaby.co.uk](http://www.dreambaby.co.uk)



**dreambabysafety**

**You Tube**

**dreambabytv**

Made in Dongguan City, China.  
©2018 Tee-Zed Products Pty Ltd



X.02